

# SOLID STATE RELAYS

## 10 to 100 amps

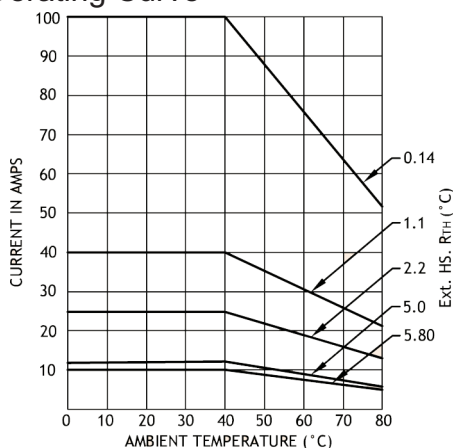


- ▶ Opto/Magnetic Isolation to 2500 VAC
- ▶ Compatible to TTL
- ▶ Power Darlington / MOSFET / IGBT Output
- ▶ Very Low Power Dissipation
- ▶ Reverse Polarity Protection
- ▶ Microsecond Switching
- ▶ Panel/DIN Mountable

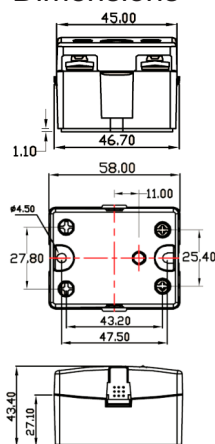
### ELECTRICAL SPECIFICATIONS @ TA = 25°C

Ordering Code			Z001-KDD 61000	Z001-KDD 201200	Z020-KDD 202500	Z020-KDD 204000	Z020-KDD 610000
			<b>INPUT</b>				
	Dwg Symbols	Unit					
Control Voltage Range		Vdc	4-32	4-32	4-32	4-32	4-32
Control Current Range		mA	15	15	15	15	15
Pick-up Voltage		Vdc	4	4	4	4	4
Drop-out Voltage		Vdc	1	1	1	1	1
Input Resistance		kOhms	2.1	2.1	2.1	2.1	2.1
			<b>OUTPUT</b>				
Load Current	It	A	10	12	25	40	100
Load Voltage	V	Vdc	60	200	200	200	60
Surge Current (Non-Rep)	ITSM		72	110	120	200	520
On State Voltage Drop	Vt	Vdc	1.6	1.6	1.6	1.6	1.6
Off State Leakage Current @ Rated Voltage	Idrm	µA	100	100	100	100	100
Thermal Resistance	RtH	°C/W	1.15	0.7	0.5	0.5	0.6
Turn-On	T-on	µs	500	600	600	600	600
Turn -Off	T-off	µs	800	2600	2600	2600	2600
Operating Temp	T Oper	°C	-30 to +80	-30 to +80	-30 to +80	-30 to +80	-30 to +80

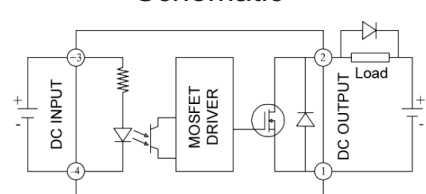
### Derating Curve



### Dimensions



### Schematic



Distributed by:

Z-TRAUQ INC. reserves the right to modify these specifications without prior notice.