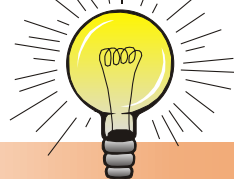


# E-Z PIK TIMER CHART

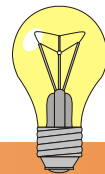


**SUPPLY VOLTAGE**  
**ON**

**OUTPUT ACTIVATED**



**OUTPUT DEACTIVATED**



**TYPE OF OUTPUT**

SPDT

DPDT

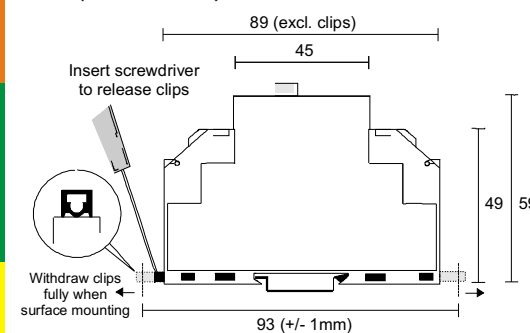
TRIAC



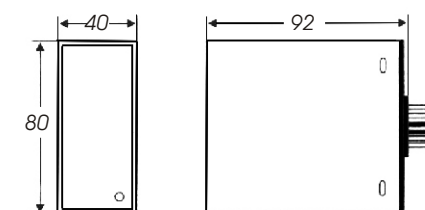
Supply Voltage ON	Output Activated	Output Deactivated	Type of Output
	Delayed (after set time)	When supply is removed	M1DOM, M1DID, M1DFD, M1EDO, M1MFT, M1SMT (SPDT); M3DOM, M3MFT, B1MFT (DPDT); M1DOM/S, M1ESDO (TRIAC)
	Immediately	After set time	M1ISM, M1DID, M1EIN, M1MFT, M1SMT (SPDT); M3MFT, B1MFT (DPDT); M1ISM/S (TRIAC)
	Immediately	Removing supply voltage + set time	M1EDF, M1EDF/F (SPDT); B1DFM (DPDT)
<b>+C.C.</b> (Control Contact)	Repeat Cycle	On = Off	M1ESN, M1MFT (SPDT); M3MFT, B1MFT (DPDT); M1ESFL (TRIAC)
		On ≠ Off	M1EFL, M1ESF, M1MFT (SPDT); B1MFT (DPDT)
		On first	M3RNM, B1ARM (DPDT)
		Off first	M3RFM, M3RTM, B1ARM (DPDT)
	Upon closing C.C.	Re-opening C.C. + set time	M1DNM, M1DFD, M1ESW, M1SMT (SPDT); M1DNM, M1SMT (TRIAC)
		After set time	M1DNM, M1SMT (SPDT); M1DNM, M1SMT (TRIAC)

**"M" SERIES DIMENSIONS**

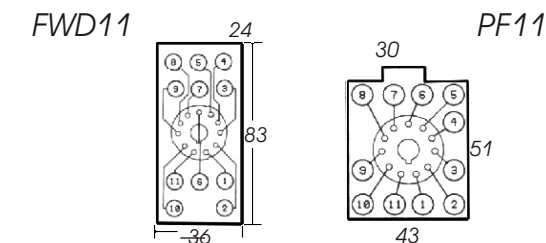
Directly to the mounting plate  
OR  
Clip onto a symmetrical 35mm DIN rail



**"B" SERIES DIMENSIONS**



**MOUNTING SOCKETS for "B" SERIES**



Dimensions (mm)